



# How to Start Your Own Business

Abdurrahman Afa Haridhi



**Batik  
Sejawat**  
Batik Motif Anatomi & Kedokteran

# Scenarios for the economic impact of the COVID-19 crisis

GDP impact of COVID-19 spread, public health response, and economic policies

## Virus spread and public health response

Rapid and effective control of virus spread



Virus contained, but sector damage; lower long-term trend growth

**A3**



Virus contained, slow recovery

**A4**



Virus contained; strong growth rebound

Effective response, but (regional) virus resurgence



Virus resurgence; slow long-term growth

**A1**



Virus resurgence; slow long-term growth  
Muted World Recovery

**A2**

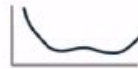


Virus resurgence; return to trend growth  
Strong World Rebound

Broad failure of public health interventions



Pandemic escalation; prolonged downturn without economic recovery



Pandemic escalation; slow progression towards economic recovery



Pandemic escalation; delayed but full economic recovery

Ineffective interventions

Partially effective interventions

Highly effective interventions

## Knock-on effects and economic policy response

# Scenario A1

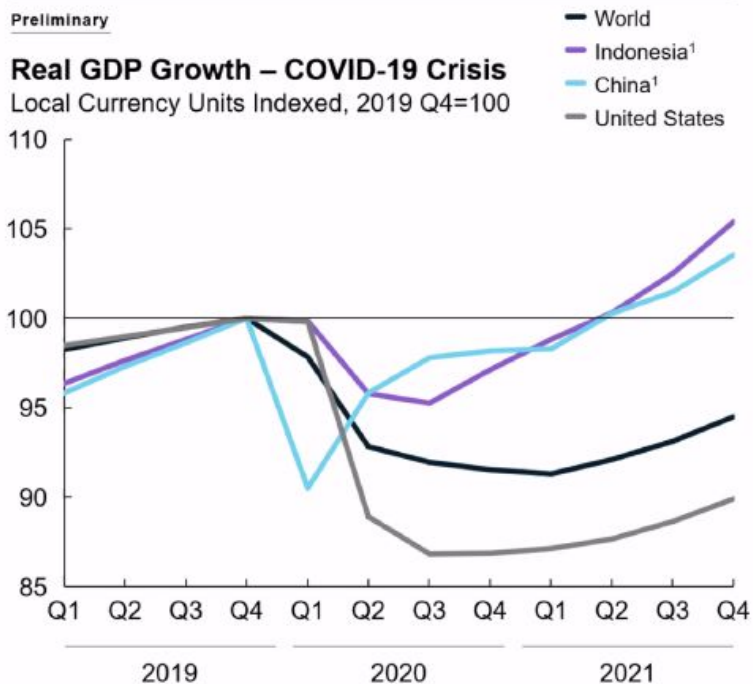
## Muted Recovery

Real GDP, Local Currency Indexed

Preliminary

### Real GDP Growth – COVID-19 Crisis

Local Currency Units Indexed, 2019 Q4=100



1. Seasonally adjusted by Oxford Economics

Source: McKinsey analysis, in partnership with Oxford Economics

Real GDP Drop  
2019Q4-2020Q2  
% Change

2020 GDP  
Growth  
% Change

Time to Return  
to Pre-Crisis  
Quarter

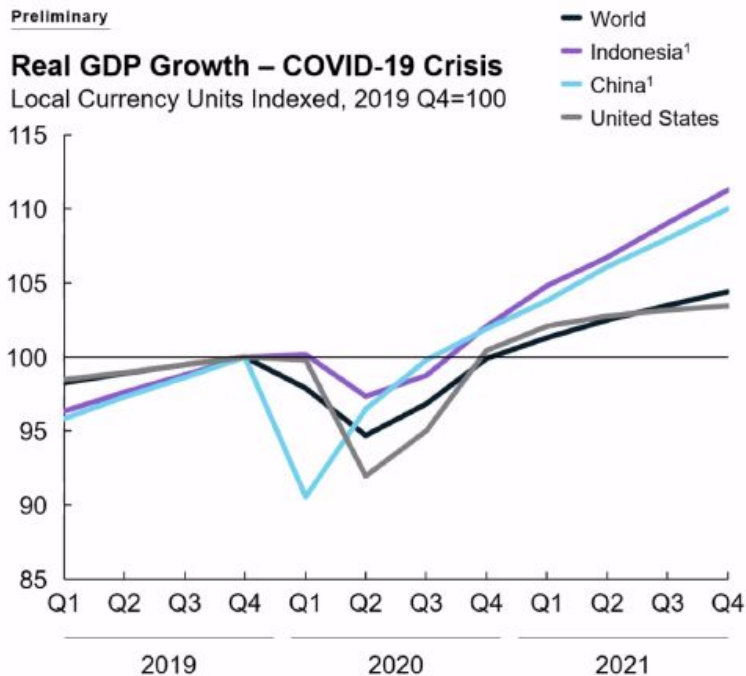
World	<b>-7.2%</b>	<b>-5.7%</b>	<b>2022 Q4</b>
Indonesia	<b>-4.2%</b>	<b>-1.2%</b>	<b>2021 Q2</b>
China	<b>-4.2%</b>	<b>-2.4%</b>	<b>2021 Q2</b>
USA	<b>-11.1%</b>	<b>-8.7%</b>	<b>2024 Q2</b>

# Scenario A3 Virus Contained

Real GDP, Local Currency Indexed

Preliminary

**Real GDP Growth – COVID-19 Crisis**  
Local Currency Units Indexed, 2019 Q4=100



1. Seasonally adjusted by Oxford Economics

	Real GDP Drop 2019Q4-2020Q2 % Change	2020 GDP Growth % Change	Time to Return to Pre-Crisis Quarter
World	<b>-5.3%</b>	<b>-1.8%</b>	<b>2021 Q1</b>
Indonesia	<b>-2.7%</b>	<b>+1.4%</b>	<b>2020 Q4</b>
China	<b>-3.5%</b>	<b>-0.8%</b>	<b>2020 Q4</b>
USA	<b>-8.0%</b>	<b>-2.4%</b>	<b>2020 Q4</b>

# Recovery to pre-COVID levels is expected to happen at different rates among sectors

Industry	A1		A3	
	2020 Growth	Return to pre-crisis	2020 Growth	Return to pre-crisis
Healthcare	6%	2020	7%	2020
<b>Agriculture</b>	5%	2021	5%	2020
Public admin and defence	4%	2020	6%	2020
Education	4%	2020	5%	2020
<b>Basic Materials</b>	3%	2021	4%	2020
Media and entertainment	3%	2020	6%	2020
Business Services	1%	2020	4%	2020
Telecom	1%	2020	4%	2020
Financial sector	0%	2021	4%	2020
Tourism	0%	2021	3%	2020
Real Estate	0%	2020	3%	2020
<b>Utilities</b>	-1%	2021	2%	2020
Logistics and trading	-2%	2021	1%	2020
<b>Oil and Gas</b>	-2%	n/a	-3%	n/a
Transport	-4%	2021	-1%	2021
<b>Chemicals</b>	-5%	2022	-2%	2021
Consumer services and retail	-8%	2022	-4%	2021
<b>Manufacturing</b>	-9%	2022	-6%	2021

 Heavy industry

**dr. Tirta**

Mulai dari jual gorengan



dr. Tirta dengan Gut Pringgondani by  
Batik Sejawat

# drg. Chairil Tanjung

Mulai dari tukang fotocopy



# Jonatan Sudharta



# Tommy Wong

Mulai dari tukang jual koran



EL JOHN TV

kunci hidup Tommy Wong

1. karakter
2. konsisten
3. tidak boleh sombong

 InspiraTalk

*Mulailah dengan Visi!  
Jaga dengan Komitmen!  
Dan tepati janji!*



**Batik  
Sejawat**  
Batik Multi Asasim & Kerokoran



---

## Tiga level Bisnis

1. By Product
2. By Pain
3. By Social

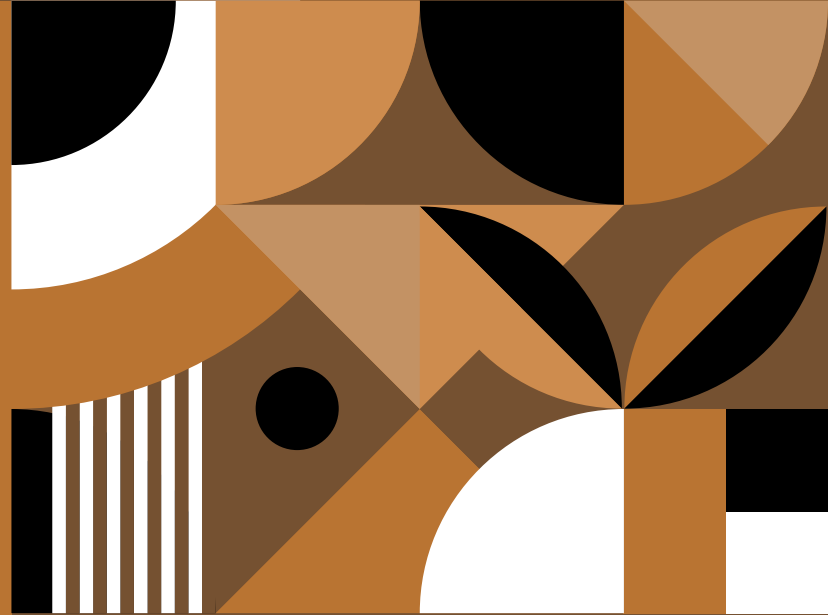


---

# Tips Memulai Bisnis

---

## 1. Pasang Niat





# Temukan definisi sukses Anda!

Katakanlah (Muhammad),

“Wahai kaumku! Berbuatlah menurut kedudukanmu, aku pun berbuat (demikian).

Kelak kamu akan mengetahui, siapa yang akan memperoleh tempat (terbaik) di akhirat (nanti).

Sesungguhnya orang-orang yang zalim itu tidak akan beruntung.

— QS. 6:135

Dan katakanlah,

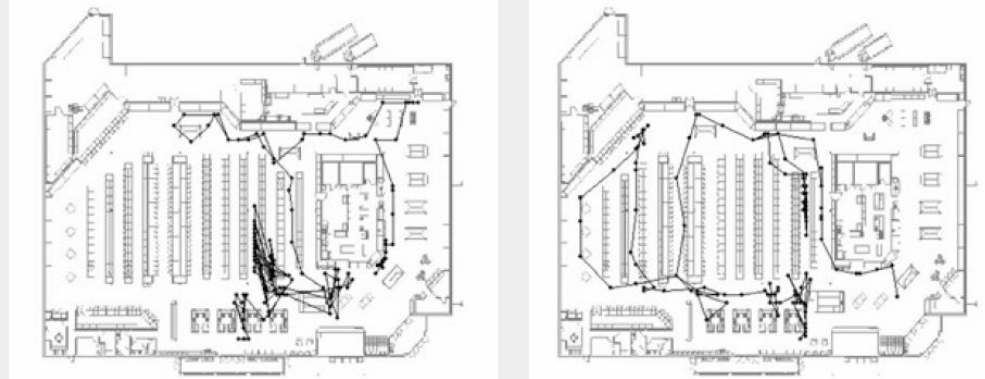
“Bekerjalah kamu, maka Allah akan melihat pekerjaanmu, begitu juga Rasul-Nya dan orang-orang mukmin, dan kamu akan dikembalikan kepada (Allah) Yang Mengetahui yang gaib dan yang nyata, lalu diberitakan-Nya kepada kamu apa yang telah kamu kerjakan.” — QS. 9:105

---

# Tips Memulai Bisnis

---

1. Pasang Niat
2. Riset



■ Fig. 2.4 Supermarket shopping paths

---

# Tips Memulai Bisnis

---

1. Pasang Niat
2. Riset
3. Silaturahmi



---

# Tips Memulai Bisnis

---

1. Pasang Niat
2. Riset
3. Silaturahmi
4. Action!



---

# Tips Memulai Bisnis

---

1. Pasang Niat
2. Riset
3. Silaturahmi
4. Action!
5. Ulangi



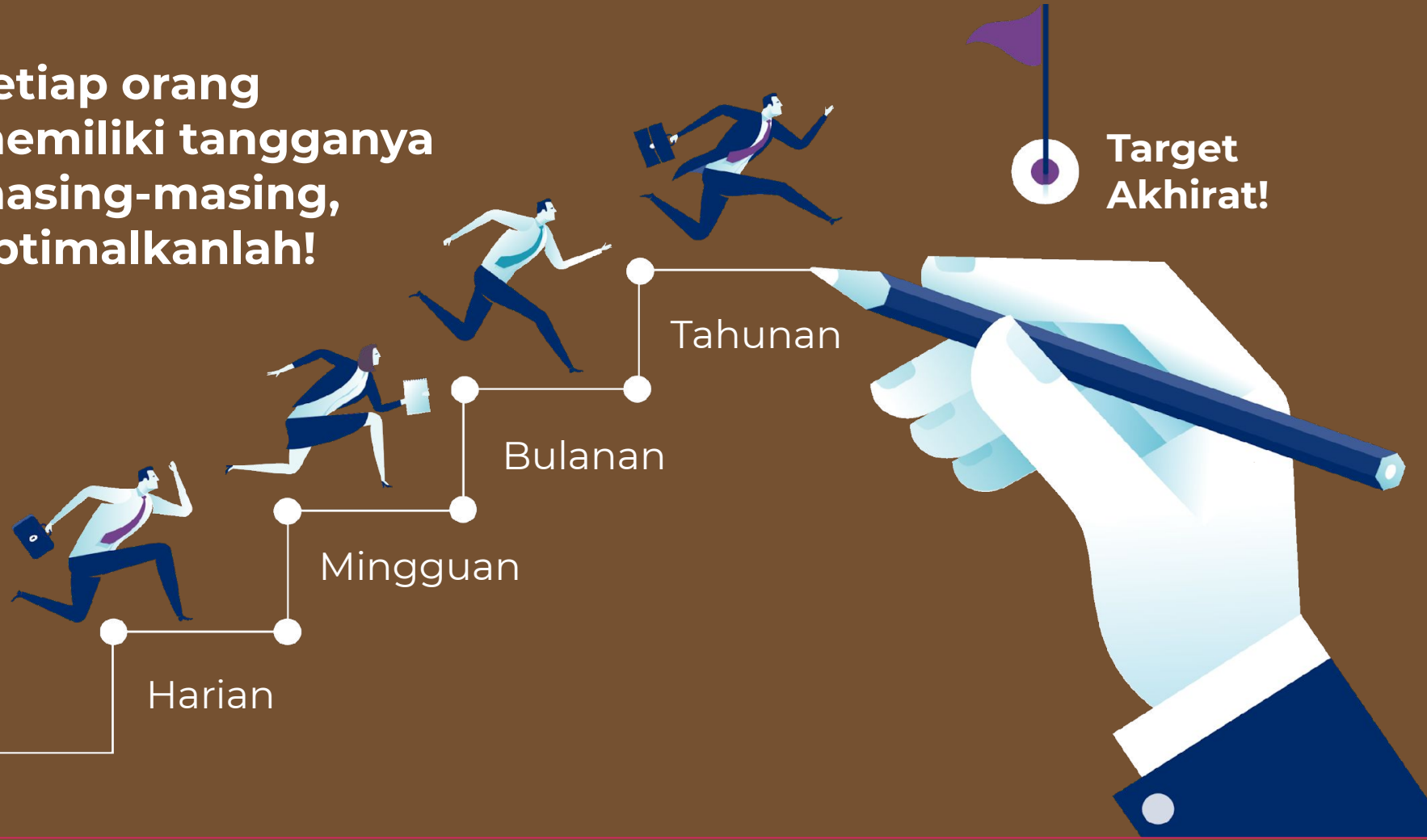


# Kunci dari bisnis adalah Jalur Distribusi

*Chandra Putra Negara*

1. Keberanian
2. Teknologi
3. Penguasaan produk
4. Bangun Jalur Distribusi
5. Supplier base & Customer Base
6. Konsumen Tetap
7. Tempat

Setiap orang  
memiliki tanggung  
jawabnya masing-  
masing,  
optimalkanlah!





# 7 Kesalahan Fatal Pengusaha Pemula

*Dewa Eka Prayoga*

1. Asal Action
2. Ikut-Ikutan
3. Gampang Percaya
4. Ingin Cepat
5. Banyak Gaya
6. Mudah Hutang
7. Buta Finansial

## Kemana kita kembali?

*"Tiap tiap yang berjiwa akan merasakan mati. Dan sesungguhnya pada hari kiamat sajalah disempurnakan pahalamu. Kehidupan dunia itu tidak lain hanyalah kesenangan yang memperdayakan".*

(QS 3: 185)

# Hakikat Kehidupan

## Dari mana kita berasal?

*"Dan sesungguhnya Kami telah menciptakan manusia dari suatu saripati (berasal) dari tanah."  
--(QS 23 : 12)*

## Untuk apa hidup?

*"Tiap tiap yang berjiwa akan merasakan mati. Dan sesungguhnya pada hari kiamat sajalah disempurnakan pahalamu. Kehidupan dunia itu tidak lain hanyalah kesenangan yang memperdayakan".*

(QS 3: 185)





# Matur Nuwun


DO YOU HAVE ANY QUESTIONS?

**Slide download**  
[batiksejawat.com/sejawatalks](http://batiksejawat.com/sejawatalks)

THANKS



@batiksejawat

Slide edited by @batiksejawat using templates by  slidesgo 24Slides